

Next, we simply transpose these notes up two lines, by selecting them all and using Ctrl-Shift-↑ twice.



So now we copy all of this staff.

```
php\php.exe Scripts\scratch.php copy
```

If we give cut or copy no extra parameters, they will cut or copy the whole of the selection (the whole staff if nothing is selected).

Finally, we need to merge all of this.

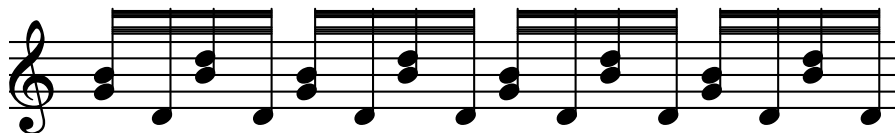
```
php\php.exe Scripts\scratch.php merge
```

...giving the following:



Later versions of scratch will deal with note stems better. But you will see that the notes have been merged back into the expected positions.

A quick Alt-Tools | Audit Note Stems and Alt-Tools | Automatic Beam yields the pretty result.



Another Example: Multi-voice parts

Whilst you would probably want to do this with overlays, say you have a fugue or something where for only one bar you want to merge a voice from the left hand. You have this already on the right.



and you want to add



which has wandered into this staff from the left hand.

Simply copy the lower notes.

```
php\php.exe Scripts\scratch.php copy
```

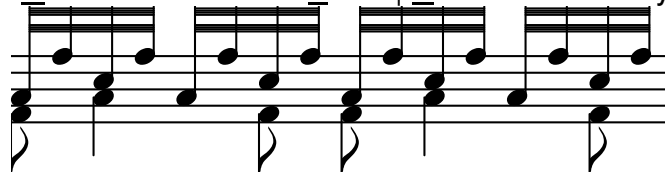
and merge with the upper ones.

```
php\php.exe Scripts\scratch.php merge
```

and voila!



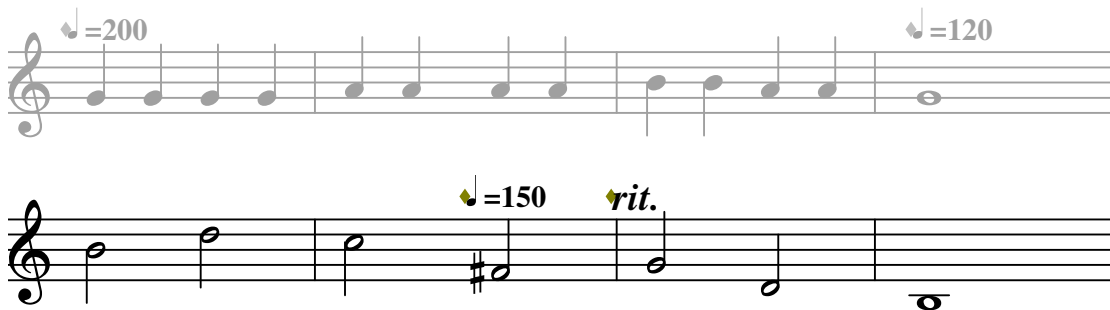
All the notes are there where you expect them. Tidying with Alt-Tools | Audit Note Stems and Alt-Tools | Automatic Beam yields:



There are great possibilities for working with harmonisation lines, removing them with `parts.php` if necessary and merging them back.

Final example: Merging non-time elements.

You've written your masterpiece and wondering why the *rit* isn't working. Then it hits you that you've got your tempo marks on all over both staves.

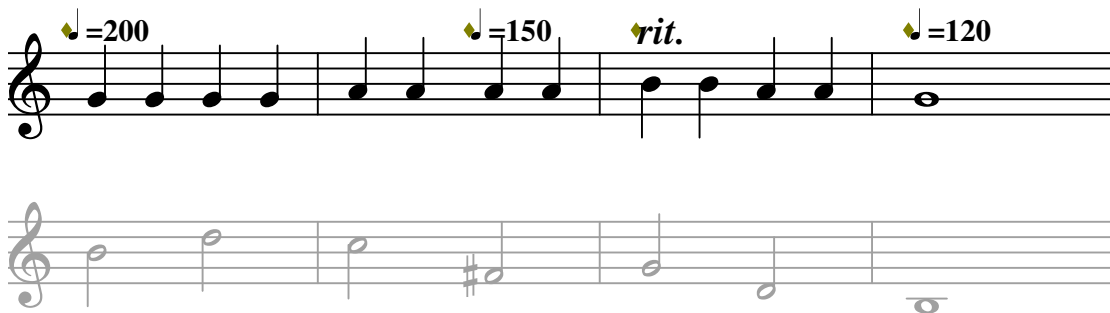


So you quickly cut the tempo and tempo variance objects from the bottom staff.

```
php\php.exe Scripts\scratch.php cut Tempo TempoVariance
```

and merge them to the top.

```
php\php.exe Scripts\scratch.php merge
```



Where does the copy or cut stuff go? It is written to a file called `scratch.txt` and probably in the `NWC2` program folder.

It is virtually identical to a clip, except that it is missing the `NWC Clip` header and tail.